



# EGI Federation Strategy\_

## 2026-2030

From Computing Federation to Europe's  
AI-Ready Compute & Data Continuum for  
Research and Innovation

# Table of Contents

04

**EGI Federation for  
Data-Intensive  
Research**

05

**EGI Federation  
Today**

14

**Pillars**

- 14 Leadership in Sovereign Compute-Data Federation
- 16 A Model for Incentivised Cross-Border Access
- 18 A Resilient and Sustainable Innovation Ecosystem

20

**Key  
Partnerships**

06

**Strategy at a  
Glance**

07

**Vision, Mission  
& Ambition**

22

**Whom We Serve**

08

**The Strategic  
Context**

10

**Our Value  
Streams**

- 11 VS1: Powering the Federation  
VS2: Enabling Scientific Computing
- 12 VS3: Enabling Sustained Innovation
- 13 How Value Streams Connect

24

**What We Offer**

26

**Glossary**

# EGI Federation for Data-Intensive Research

**The EGI Federation delivers digital infrastructure and collaborative innovation at scale, accelerating research across scientific disciplines.**

The EGI Federation delivers large-scale digital infrastructure and collaborative innovation, enabling tens of thousands of researchers across scientific disciplines to accelerate discovery. Through a federation of hundreds of service providers from both public and private sectors across Europe and beyond, it provides advanced computing and data analytics capabilities that no single organisation could achieve alone.

The EGI Foundation, headquartered in Amsterdam, coordinates this federation through a two-sided platform: on one side, service providers harmonise interfaces and connect to a common hub; on the other, research communities shape demand, simplify access, and

drive innovation. This model unites leading national organisations and research infrastructure hubs across Europe, turning individual contributions into large-scale collaboration and collective investment.

As research becomes increasingly data-intensive and AI-enabled, EGI is evolving to meet these challenges. The 2026-2030 strategy charts this transformation **from computing federation to Europe's AI-ready compute-data continuum**: a trusted, sovereign infrastructure where researchers can seamlessly access the computing power, data resources, and expertise they need to address humanity's greatest challenges.



# EGI Federation Today

## Benefits for Research Communities

**Pan-European access to general and specialised computing resources at scale**

**Skills development through training and shared knowledge**

**Accelerated discovery through seamless collaboration across borders**

**Efficient resource use across different administrative domains**

**Expert support from distributed teams across Europe**

**Open science with assured access to shared resources and expertise**

**Innovation opportunities through collaborative development**

## EGI in Numbers

### EGI Federation

**28**

EGI Council Participants Across 21 Countries

**20+ Years**

of Continuous Service Delivery

**210+**

Federated Providers Across 42 Countries

**30+**

Services in the Catalogues

### Research Impact

**160K+**

Researchers Across 182 Countries

**29K+**

Scientific Publications Enabled Since 2010

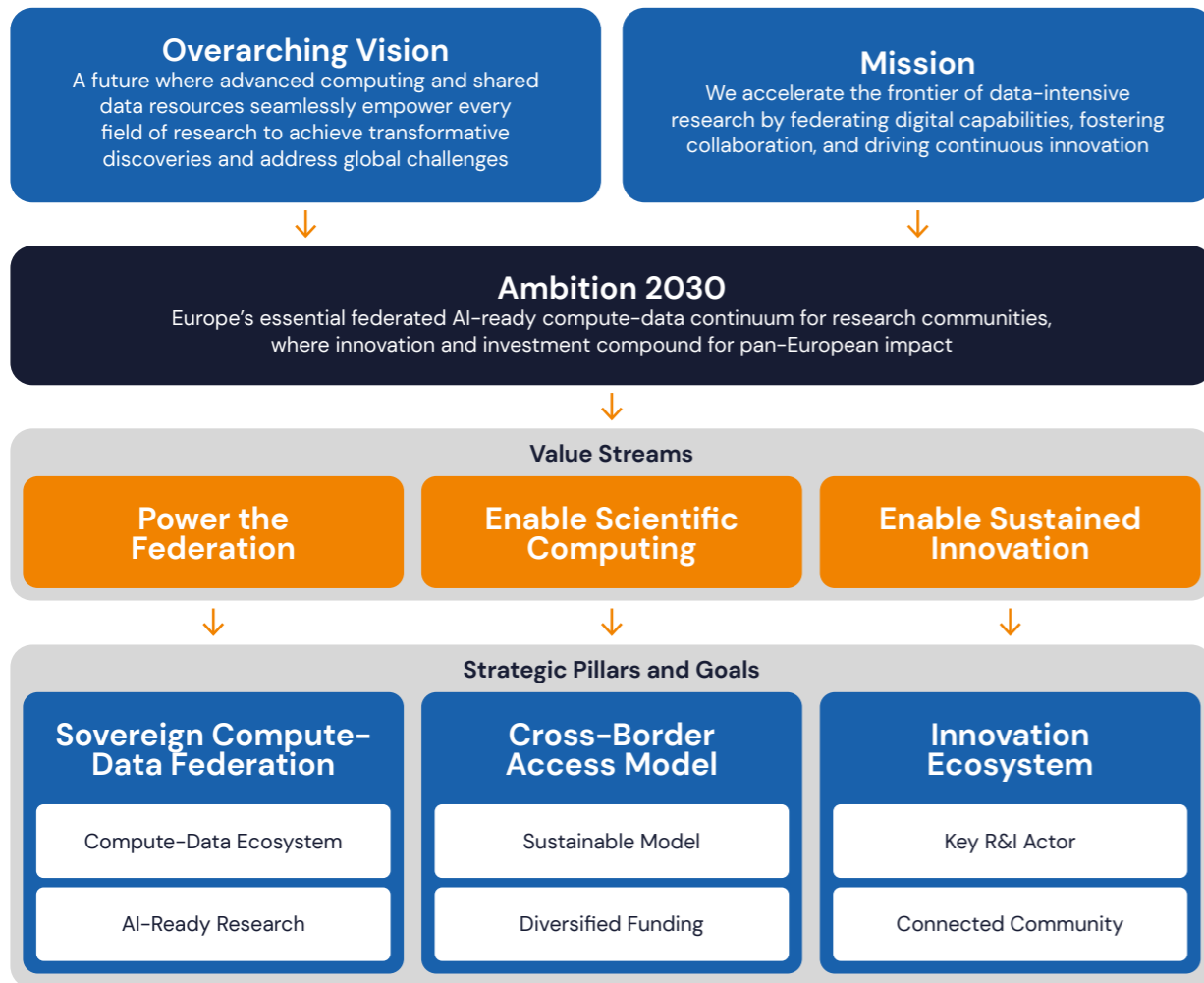
**200+**

Active Research Communities Including 40+ RIs

**60+**

Research & Innovation Projects since 2010

# Strategy at a Glance



# Vision, Mission & Ambition

## Our Vision

**A future where advanced computing and shared data resources seamlessly empower every field of research to achieve transformative discoveries and address global challenges.**

This vision describes the world we seek to create, where research of all kinds can harness

digital capabilities to advance knowledge and solve humanity's greatest challenges.

## Our Mission

**We accelerate the frontier of data-intensive research by federating digital capabilities, fostering collaboration, and driving continuous innovation.**

EGI uniquely connects distributed IT resources into an interoperable federation, addressing technical and policy aspects across geographical boundaries and disciplines. At the same time, EGI drives

collaborative innovation by bringing together research communities, service providers, and technology experts to jointly develop solutions, share knowledge, and co-create new capabilities.

## Ambition 2030

**Europe's essential federated AI-ready compute-data continuum for research communities, where innovation and investment compound for pan-European impact.**

By 2030, the EGI Federation will be a key player in AI-ready research infrastructure across Europe. Through its federated model, innovation outcomes will be valorised into sustained capabilities, and national investments will multiply into pan-European impact.

# The Strategic Context

Five key trends are reshaping the landscape for research infrastructure. These trends create both significant opportunities and challenges that demand strategic evolution.

## 01

### Open Science Requires Trusted, Resilient Infrastructure

UNESCO's 2021 Recommendation on Open Science establishes open science as an international standard. The European Open Science Cloud (EOSC) is Europe's flagship initiative to make research data and services findable, accessible, interoperable, and reusable (FAIR) across borders and disciplines. Federated infrastructures that enable openness through trust are essential to realising this vision.

## 02

### AI Transforms Research Across All Disciplines

Artificial intelligence has moved from specialised application to fundamental research tool, transforming scientific research from literature reviews to lab automation. The European Commission's RAISE initiative recognises that researchers now expect AI-ready infrastructure as standard capability.

## 03

### Cross-Domain Infrastructure Demand

Digital transformation creates demand for horizontal infrastructure serving multiple disciplines simultaneously. ESFR's 2024 Landscape Assessment identifies critical gaps in collaboration between Research Infrastructures and e-infrastructures, gaps that federated approaches can address.

## 04

### Digital Sovereignty Becomes Operational

European entities increasingly prioritise digital sovereignty, reducing dependency on non-European technology providers whilst maintaining openness. The EC's 2025 Strategy on Research and Technology Infrastructures identifies research infrastructures as "underpinning European technological and data sovereignty."

## 05

### Building Digital Workforce Capacity

Skills gaps constrain both the operation and use of federated research infrastructure. The scarcity of professionals combining infrastructure expertise with research domain knowledge creates a critical bottleneck requiring new career pathways.

# Our Value Streams

EGI delivers value through three core, interconnected value streams. Each defines how value is created and delivered through the interaction of different stakeholder groups.

## VS1: Power the Federation

### Enable trusted federation coordination through platforms, policies, and governance

The EGI Foundation operates critical federating services in collaboration with selected EGI Participants. Together, we provide the platforms, standards, and governance that enable distributed resources to work as one coherent infrastructure.

#### For whom

EGI Participants, Affiliated Service Providers, and external organisations (Research Infrastructures, EOSC, Data Spaces) seeking federation expertise

#### Strategic evolution

Expand federation capabilities to integrate data providers and strengthen positioning as Europe's compliance-ready research ecosystem

## VS2: Enable Scientific Computing

### Provide seamless access and value-added services in the AI-ready compute-data continuum

We deliver integrated computing services spanning high-throughput computing, cloud, and HPC, combined with data platforms and AI capabilities. Research communities receive tailored support, while individual researchers are connected to the most suitable providers.

#### For whom

Research Communities, Research Infrastructures, International Projects, Individual Researchers, SMEs, and Public Administrations

#### Strategic evolution

Deliver an AI-ready compute-data continuum with improved funding models for cross-border access at scale and domain-specific exploitation platforms

VS = Value Stream

### VS3: Enable Sustained Innovation

# Coordinate collaborative R&I through connected communities and aligned funding

We pool expertise from federation members and transition innovations to operational services that persist beyond project lifecycles. Our collaborative innovation framework enables cutting-edge solutions to shared challenges with pan-European impact.

#### For whom

EGI Federation Members seeking collaborative R&I programmes, and Research Communities seeking environments to co-design advanced solutions

#### Strategic evolution

Establish participatory innovation that persists beyond project lifecycles through connected communities, diversified funding, and demonstrated impact measurement

VS = Value Stream

## How the Value Streams Connect



VS1 coordinates and federates providers enabling them to supply resources through VS2 to research communities. VS3 drives continuous improvement across the federation, co-designing solutions with research communities and evolving both federation capabilities and scientific computing services.

PILLAR

01

# Leadership in Sovereign Compute-Data Federation

Building on two decades of operating a trusted, pan-European federation, we will deliver a sovereign, integrated compute-data ecosystem that respects Europe's diverse national priorities.

## Strategic Goal 1

# Strengthen, Federate and Integrate a Sovereign Compute-Data Ecosystem

We will evolve EGI into a resilient, federated ecosystem that seamlessly integrates local, regional, national, and community compute and data resources. By evolving interoperable solutions for identity, computational workload, and data management, we create an environment where researchers can discover and analyse resources without technical barriers, whilst ensuring sovereignty and FAIR-compliant data access.

### What We Will Deliver

- **Expanded Compute Continuum:** Growing capacity with diversified capabilities including Cloud, HTC, HPC, quantum computing, and AI-ready resources
- **Compute-Data Integration:** A federated compute and data continuum, enabling researchers to process data close to its source

- **Thematic Data Exploitation Platforms:** Domain-specific platforms (Virtual Research Environments, Digital Twins) integrated with the compute-data continuum
- **Secure Sensitive Data Processing:** Federated solutions for cross-institute and cross-border sensitive data access, including Trusted Research Environments
- **EOSC Contribution:** An EGI Node implementing the EOSC compute platform, contributions to the EOSC EU Node, and federating services for EOSC Nodes

## Strategic Goal 2

# European Leadership in AI-Ready Research Infrastructure

We will accelerate Europe's capacity for data-intensive and AI-based research by coordinating a federated network of AI experts, providing training and technical support to research communities, enabling federation members to expand their AI-capable infrastructure, and collaboratively developing AI solutions in alignment with RAISE.

### What We Will Deliver

- **AI Services Portfolio:** New and extended service catalogues with general and thematic AI solutions, frameworks, models, and datasets, all compliant with relevant AI regulations
- **Federated AI Competence Centre:** A network of AI experts from EGI participants and collaborating research communities delivering regular training programmes and technical support across the federation

- **RAISE Contribution:** Federation expertise contributed to RAISE Secretariat and governance, with EGI recognised as a key contributor in pooling compute, data, and expertise across scientific disciplines
- **AI-Ready Services:** Operational services including AI models as a service, medium-scale training support, and distributed AI-ready data access

**"EGI accelerates Europe's capacity for AI-based research by coordinating AI expertise, delivering training programmes, expanding AI capabilities, and developing solutions that enhance scientific productivity."**

PILLAR

02

# A Model for Incentivised Cross-Border Access

As a trusted, neutral broker, we will overcome current barriers to cross-border access by implementing a sustainable, country-supported access model with clear incentives for resource providers, enabling researchers to seamlessly access specialised resources across Europe.

## Strategic Goal 3

### Build a Sustainable and Incentivised Federation Model

We address the current policy and funding barriers that limit cross-border resource sharing. We will develop frameworks supporting multiple incentive models aligned with provider needs, including academic recognition, capacity commitments, and funding opportunities. This makes resource sharing both sustainable and valuable for all participating members.

#### What We Will Deliver

- **Flexible Incentive Framework:** Governance supporting multiple incentive models including citations, capacity commitments, and funding aligned with provider constraints
- **Technical Compensation Systems:** Systems and tools supporting compensation for resource sharing across the federation

- **Regulatory Support:** Assistance for providers to reduce barriers for participation in cross-institute and cross-border provisioning
- **Pooled Cross-Border Capacity:** Growing numbers of providers with allocated capacity for cross-national access, operating to time and quality targets
- **European Catalogue Integration:** EGI service catalogue integrated into European-wide catalogues for transnational and virtual access

## Strategic Goal 4

### Diversified Funding Models

We address dependency on short-term project funding through funding diversification and optimised resource pooling. We will evolve our legal framework and establish multiple revenue streams whilst optimising in-kind contributions, ensuring both financial sustainability and strengthened federation capacity.

#### What We Will Deliver

- **Legal Framework Evolution:** Assessment of legal framework options (including ERIC, EDIC, and alternatives) with Council-approved recommendations and implementation roadmap
- **National Roadmap Integration:** Increased presence of EGI Federation in national research infrastructure roadmaps
- **Pay-for-Use Options:** Pay-for-use models available for federation members in alignment with national and member priorities

- **Optimised In-Kind Contributions:** Refreshed framework optimising federation capacity and member participation
- **Co-Financing Secured:** European and national co-financing to support EOSC participation and cross-border operations
- **Cross-Sector Business Models:** Validated models for the exchange of data and services across research and commercial sectors

"A cross-border resource access mechanism is available and supported in the EGI Federation to overcome current policy and funding barriers."

PILLAR

03

# A Resilient and Sustainable Innovation Ecosystem

We will build a resilient innovation ecosystem by empowering federation members to drive collaborative innovation through Special Interest Groups, providing platforms to enable their

work, diversifying funding models, and facilitating resource pooling, so that innovations are sustained and evolved collaboratively beyond project lifecycles.

## Strategic Goal 5

# Position EGI as a Key R&I Actor for Federated Compute–Data Continuum

We will strengthen and align R&D contributions from across the Federation into an interconnected and collaborative programme supported by national and European funding, focusing on key priorities including federated trust and identity management, sensitive data management solutions, and digital twins.

### What We Will Deliver

- **Integrated R&I Agenda:** An EGI R&I Agenda supported by national contributions (in-kind, in-cash) and strategically selected European project funding
- **Validated Technical Solutions:** Interoperable solutions for advanced computing across infrastructure,

platform, application, data, and federation layers, validated and endorsed by research communities

- **Innovation Asset Registry:** A registry of reusable components and documentation enabling rapid adoption of innovations
- **Technology Maturation Pipeline:** A lean pipeline across the federation to accelerate innovation from prototype to production
- **Recognition as R&I Leader:** EGI innovations adopted and cited by major European research infrastructures, with strategic partnerships demonstrating sustained collaboration

## Strategic Goal 6

# Foster Continuous Innovation through a Connected Community

We build the human infrastructure required for continuous innovation and demonstrate its value. We strengthen Federation-wide collaboration by establishing community-led Special Interest Groups (SIGs), providing platforms to enable their work, and implementing systems to measure and communicate innovation impact.

### What We Will Deliver

- **Active Special Interest Groups:** SIGs engaging federation members and research communities around priority R&D themes, open to private entities when beneficial
- **Collaboration Platforms:** Tools and platforms enabling SIG activities and knowledge sharing across the federation
- **Participatory Innovation Framework:** An EGI Collaborative Innovation Framework pooling R&D teams at national and institutional levels from multiple

disciplines and sectors

- **Impact Measurement System:** Systems tracking innovation outcomes including services deployed, research enabled, and knowledge disseminated
- **Regular Impact Reporting:** Transparent demonstration of innovation adoption, citations, and stakeholder engagement

**"By 2030, EGI is recognised as a key R&I actor for federated compute–data continuum where innovations persist beyond project lifecycles."**

# Partnerships

Delivering on our value streams requires a network of strategic partnerships across the European research and innovation landscape.

## EOSC

EGI provides the compute layer and federating capabilities for EOSC nodes, enabling researchers to process, analyse, and reuse FAIR data at scale within Europe's Open Science ecosystem.

## RAISE

EGI supports AI for science with infrastructure, technical expertise, and AI-ready data access for model training, fine-tuning, and serving.

## EuroHPC

EGI complements EuroHPC's extreme-scale HPC and AI Factory capabilities with distributed mid-scale Cloud, HTC, and HPC capacity through the Bring Your Own Infrastructure model.

## ESFRI and Research Infrastructures

EGI aligns with ESFRI roadmap priorities, complements digital-sector Research Infrastructures, and enables thematic RIs to develop specialised Data Exploitation Services.

## Data Providers and Data Spaces

EGI advances interoperability between research and commercial data services, enabling ecosystems where data can be discovered, accessed, and reused across sectors.

## European e-Infrastructure Coordination

Through the e-Infrastructure Assembly and EC-participated initiatives, EGI ensures complementarity and seamless researcher experiences across European e-Infrastructures.

## Technology and Industry Partners

EGI fosters joint innovation with R&D groups, industry, and SMEs, enriching the Federation with specialised services from public and private providers.

# Whom We Serve

The EGI Federation serves diverse groups across the research and innovation landscape. Our engagement approach is tailored to each group's needs and scale.



## Primary Groups

### Research Communities & Research Infrastructures

Research communities and infrastructures push the frontiers of science with massive data and computational requirements. They have an international nature, decades-long lifetime, and strong need for shared e-infrastructures. We provide both services and expertise for community-specific solutions.

### International Research Projects & Collaborations

International research projects, typically represented by EU-funded initiatives, cover many domains and regions. We offer IT services and technical support to run proof-of-concept and pilot setups, or to provision and operate complete e-infrastructure for their needs.

## Secondary Groups

### Individual Researchers & Small Groups

Researchers less experienced in advanced computing or lacking resources and support. We connect them to the most suitable service providers through common platforms and engagement frameworks.

### SMEs & Industry

Partners in research and innovation. We help them access compute and data-intensive services for pre-competitive research, and facilitate collaborations as providers or R&D partners.

### Public Administrations

Organisations enabling innovation in policy making, emergency management, and healthcare. We provide secure compute and data-intensive services for evidence-based decision making.

### Policy Makers & Funding Agencies

Decision makers shaping research policy and funding programmes. We provide expert advice and inform them about trends and developments in research infrastructure.

# What We Offer

For the communities we serve, the EGI Federation offers a comprehensive portfolio of services and support.



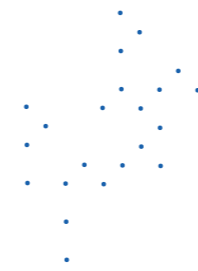
## Technical Services

Advanced computing services from horizontal and thematic providers covering:

- **Compute Continuum:** High-throughput computing, cloud, HPC integration, and quantum computing access
- **Data Services:** Storage, data management, and FAIR-compliant data access
- **AI Platforms:** AI-ready infrastructure, model serving, and training support
- **Thematic Platforms:** Domain-specific Virtual Research Environments and Digital Twins
- **Security Services:** Identity management, access control, and compliance support

## Consultancy & Support

Expert assistance to build platforms and high-level services on existing capabilities. For larger communities, we create competence centres composed of experts from both user and provider sides, delivering tailored solutions for specific research challenges.



## Training & Skills Development

Programmes helping research communities develop digital skills for modern IT and data use:

- Baseline and tailored training programmes (online and face-to-face)
- Training materials and shared learning resources
- Operator certification and service management training
- AI and data analytics skills development

## Knowledge Sharing

Events and online forums to share knowledge, best practices, and solutions:

- Annual EGI Conference
- Technical workshops and webinars
- Special Interest Groups for collaborative problem-solving
- Documentation and knowledge base

## Policy Advocacy

Mobilising the community to understand trends and needs in science and technology, advising policymakers and funders on future directions for research infrastructure investment.

# Glossary

For complete definitions, visit: [go.egi.eu/glossary](https://go.egi.eu/glossary)

- EGI Federation** (or EGI) The EGI Foundation, EGI Foundation Participants and Associated Participants, and their linked organisations (such as service and resource providers) that contribute to the objectives of the Foundation.
- EGI Foundation** (or EGI.eu or Stichting EGI) The legal entity, headquartered in Amsterdam, whose objective is to coordinate and develop the EGI infrastructure that provides long-term distributed compute and storage resources for research and innovation.
- EGI Infrastructure** Infrastructure The digital infrastructure composed of computing, storage, and data facilities operated under EGI's operational framework. It encompasses resources contributed by EGI Participants and by organisations collaborating through formal agreements (e.g. MoUs), which are collectively managed according to EGI's operational and security policies. The EGI Infrastructure interoperates with peer infrastructures that maintain independent operational structures.
- EGI** Can be used as a short version of "EGI Infrastructure" or "EGI Federation", but not for the EGI Foundation.
- EGI Council** The supervisory authority consisting of one representative for each Participant and Associated Participant of the EGI Foundation.
- EGI Participant** National Grid Initiatives (NGIs), European Intergovernmental Research Organisations (EIROs), European Research Infrastructure Consortia (ERICs), and other legal entities that contribute to the objectives of the Foundation. Participants have voting rights in the EGI Council.
- EGI Federation Member (EGI Member):** An organisation directly (EGI Participants) or indirectly (formal relationship to an EGI Participant) represented in the EGI Council.
- EGI Federation Partner (EGI Partner):** An organisation engaged with the EGI Federation via an MoU with the EGI Foundation and not directly represented in the EGI Council.
- Research Infrastructures** Facilities that provide resources and services for research communities to conduct research and foster innovation, including major equipment, knowledge-related facilities, computing systems, and communication networks open to external users.

## Council Participants



 Co-funded by the European Union



# EGI Federation Strategy 2026–2030

From Computing Federation to Europe's  
AI-Ready Compute & Data Continuum  
for Research and Innovation

## EGI Foundation

Science Park 140  
1098 XG Amsterdam  
Netherlands

This publication provides  
a public overview of the  
strategy approved by  
the EGI Council on:  
**27 November 2025**

## Connect With Us

Website:  
[www.egi.eu](http://www.egi.eu)

Phone:  
**+31 (0)20 89 32 007**

Email:  
[contact@egi.eu](mailto:contact@egi.eu)

 [egiinfra.bsky.social](https://bsky.app/org/egiinfra)

 [EGI Foundation](https://www.linkedin.com/company/egi-foundation)

 [EGI\\_einfra](https://www.youtube.com/channel/UC...)

