



SANTANDER, SPAIN

#EGI2025

Save The Date

20 | june
25 | 02 / 06
june



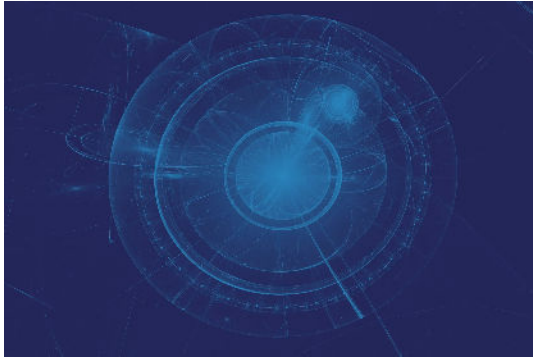
EGI
2025 EGI
EGI2025
EGI2025

Save the Date for EGI2025!

The next annual EGI conference takes place from 2-6 June 2025 at the stunning Palacio de Magdalena in Santander, Spain. Organised in collaboration with CSIC, this event will once again bring together the EGI community to advance data-intensive research and innovation.

The EGI2025 Call for Contributions opens on February 3 and will run until March 20.

[Read more](#)



EGI Federation Core Services: Supporting Research Across Europe

The EGI Federation Core supports Europe's research with interoperable, scalable services, enabling data-intensive science and innovation across disciplines.

[Learn more](#)

Project Highlights



  on  NEWS

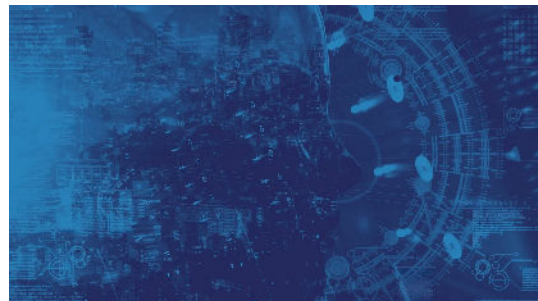
iMagine and interTwin featured on ERCIM News

ERCIM is the European Research Consortium for Informatics and Mathematics and has the objective to contribute to a leading role of Europe in ICT.

[Learn more](#)

RI-SCALE: Getting Ready to Boost the Use of Research Infrastructure Data with Scalable AI Solutions

The EU-funded project, RI-SCALE, is set to commence on March 1, 2025, bringing together 29 partners across Europe to tackle challenges in research data exploitation.



[Learn more](#)



Strengthening Open Science for Cultural Heritage: EOSC Beyond and EUreka3D Sign MoU

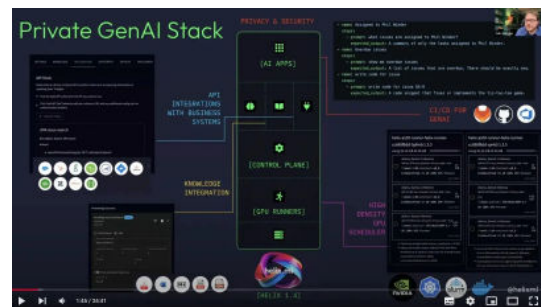
This agreement sets the stage for a structured and enduring collaboration to amplify digital solutions for cultural heritage within the European Open Science Cloud (EOSC).

[Learn more](#)

interTwin - Running GenAI on Supercomputers thanks to interLink

Generative AI has long been tied to cloud providers, but a recent demo showed how organisations can run AI workloads on existing HPC infrastructure, bridging the gap between the two.

[Learn more](#)



SPECTRUM All Hands Meeting

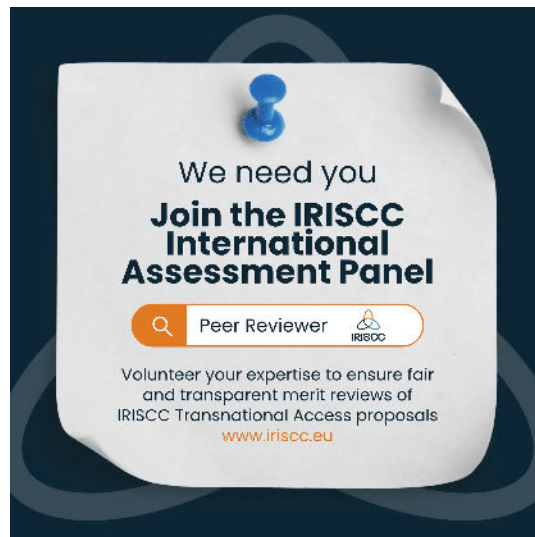
In January 2025, SPECTRUM partners gathered at CERN in Geneva, Switzerland to discuss project progress and finetune plans for the second half of the project.

[Read now](#)

Call for expression of interest to volunteer as a peer reviewer for the IRISCC Transnational Access

Help IRISCC by volunteering to review Transnational Access (TA) proposals in your area of expertise.

[Apply now](#)



Opportunities



EGI Access Call

With this Access Call, we support data-intensive science with services and related user support and training to individual researchers, research projects, research infrastructures, and commercial research entities.

[Apply Now](#)

Webinar - EGI Cloud Services: Updates, Innovations, and Future Directions

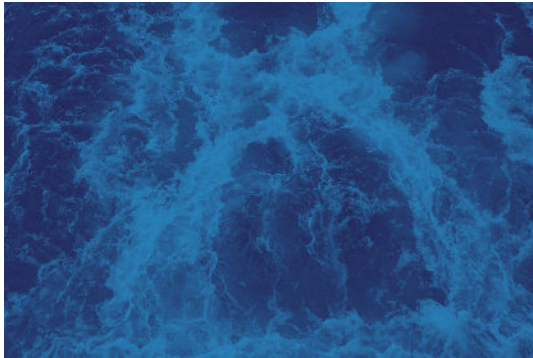
26 February 2025 - 14:00-15:00 CET

This session is ideal for researchers, service providers, and project coordinators looking to harness the power of cloud computing for scientific and collaborative endeavours.

[Register now](#)



Supporting Science



EGI and Euro-Argo ERIC Partner to Enhance Ocean Observation

EGI and Euro-Argo ERIC have recently signed a Service Level Agreement to leverage EGI Services. This partnership aims to enhance the capabilities of Euro-Argo's vital ocean observation efforts.

[Learn more](#)

Event Reports



EGI at EOSC Winter School 2025

EGI showcased leadership in innovation during the EOSC Winter School 2025 in Seville, supporting the development of the EOSC Federation.

[Read more](#)

Community Events



iMagine Starting on 16 January 2025

Webinar Series
Image analysis services for aquatic sciences

Hosted by **EGI**

imagine-egi.eu



Data Spaces Symposium
Share data. Unlock value. Boost impact.

11 & 12 March 2025
Warsaw | Hilton Hotel

DSBA



Data Spaces Symposium 2025

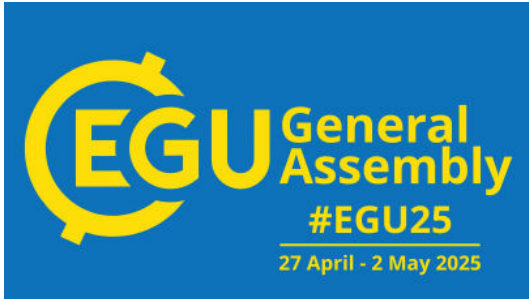
iImagine Webinar Series

16 January - 8 May 2025, Online

The webinar series provides valuable insights into the services developed by research communities within iImagine.

11-12 March 2025, Warsaw (Poland)

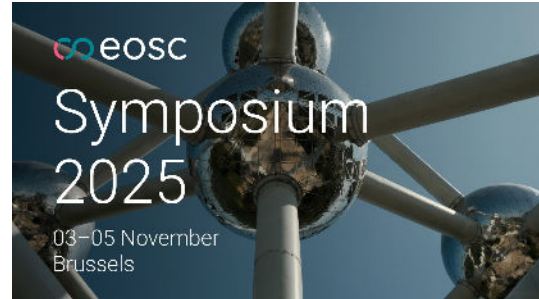
Share data. Unlock value. Boost impact.



EGI at EGU 2025

27 April - 2 May 2025, Vienna (Austria)

EGU25 brings together geoscientists from all over the world to one meeting covering all disciplines of the Earth, planetary, and space sciences.



EOSC Symposium 2025

3-5 November 2025, Brussels (Belgium)

Please mark your calendars for the EOSC Symposium 2025, the largest and most in-demand event on the EOSC calendar.

[More Events](#)

Success Stories



Web-based MATLAB integration with EGI for enhanced research



Supporting Language as Social and Cultural data with CLARIN ERIC

MathWorks is the creator of MATLAB, Simulink, and more than 90 add-on products that engineers and scientists apply to their exploration, design, and development efforts.

CLARIN was developed from the vision that all digital language resources and tools from all over Europe and beyond are accessible through an online environment for the support of researchers in the humanities and social sciences.

[More EGI Success Stories](#)



EGI Foundation

Science Park 140, Amsterdam
Netherlands

Subscribe to the EGI shared calendars:

- **EGI events organised by the EGI Foundation and by EGI members**
- **External events, but relevant events for the EGI community**

And drop us an email with your newsletter idea!

Copyright © 2023 - EGI Foundation - All rights reserved.

Read our [Privacy policy](#).

[Unsubscribe](#) | [Update preferences](#)