



EGI Council Participant: SRCE

# Participating in EGI Impact Report: Croatia

# 2023

[egi.eu](http://egi.eu)

# Table of Contents

**04**  
Infographic

**05**  
Country  
Overview

**06**  
About EGI

**10**  
EGI Contribution to the  
country excellence in  
science

**15**  
Participated  
Projects

**08**  
About  
Council  
Participant

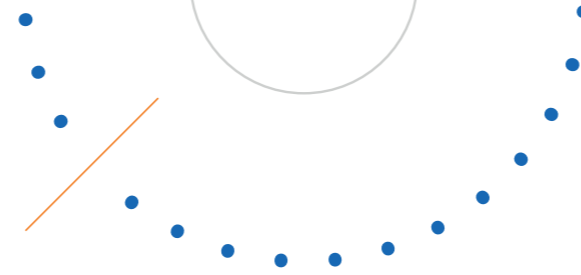
**09**  
Overall EGI  
Impact

**17**  
Infrastructure  
Contribution

**20**  
Methodology

23 National institutional members of supported research communities (table 2)

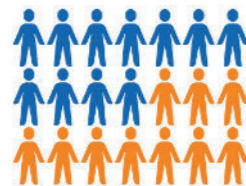
# Infographic



# Country overview

## +150 service users

In 2023, +150 researchers from Croatian institutions used the services provided by the EGI Federation



## +410 publications

The research communities, projects and scientific collaborations from Croatia supported by the EGI led to more than 410 peer-reviewed scientific publications

## 10 Supported communities

In 2023, the Croatian infrastructure supported 10 research communities in the following disciplines: Agriculture, Climate Research, Health and Medicine, Linguistics, Physics



## Projects

Croatian partners participate in 2 collaboration projects + EGI-ACE



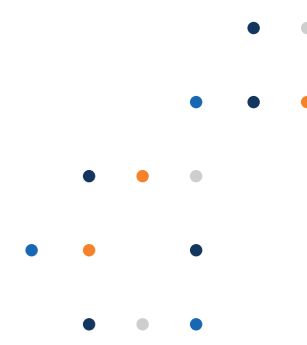
Number of supported publications 411

Number of total service users 151

Scientific Communities supported 10

Data Centres contributing to the Federation 2

Collaboration projects 2



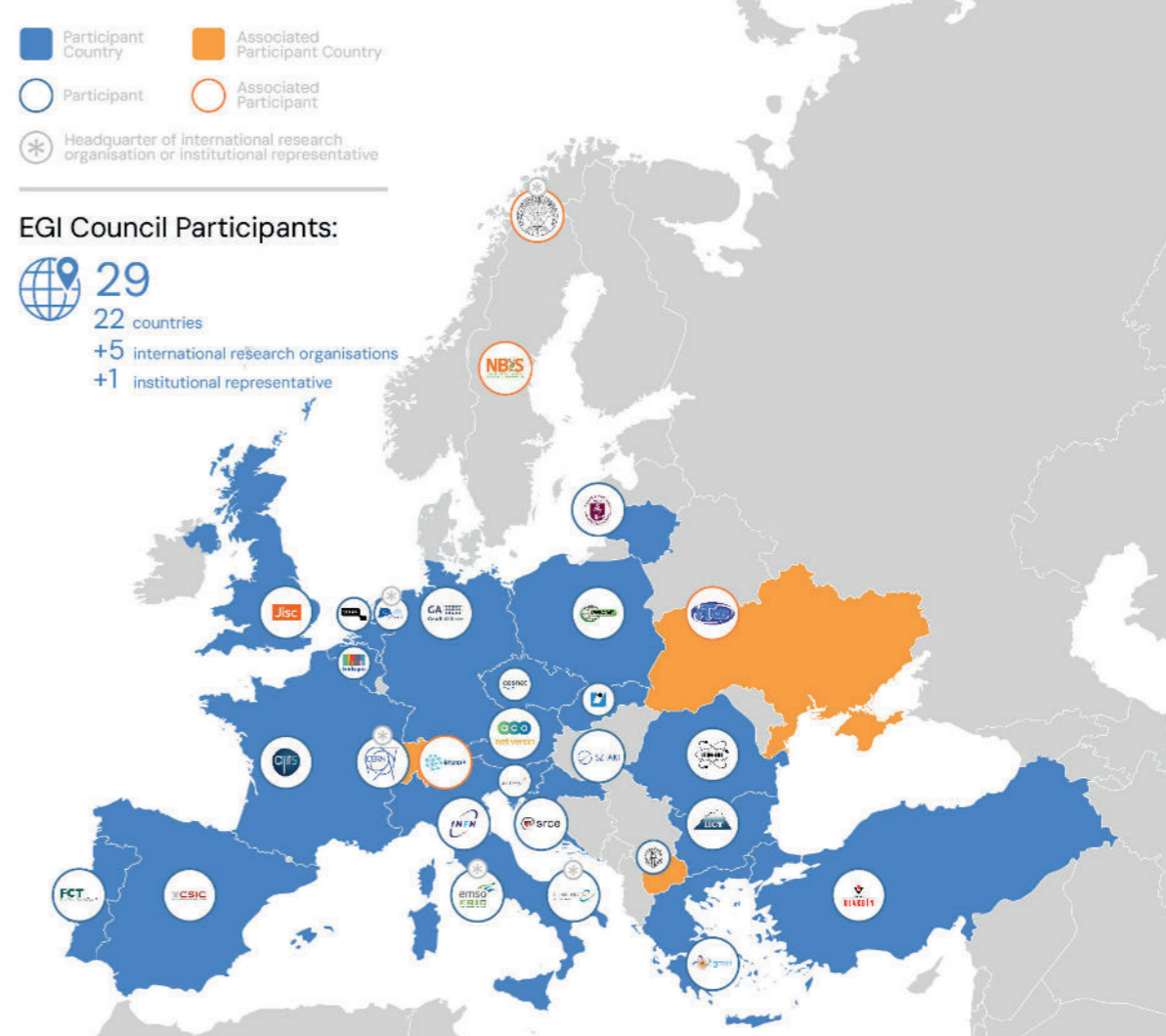
# About EGI

EGI is the federation of computing and storage resource providers united by a mission of delivering advanced computing and data analytics services for research and innovation.

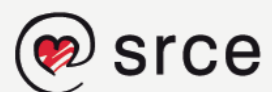
The EGI Federation believes that all researchers should have seamless access to services, resources and expertise to collaborate and conduct world-class research and innovation. The EGI Federation is coordinated by EGI Foundation, an organisation with headquarters in Amsterdam. The Foundation offers a service federation and management platform, enabling the data centres to harmonise and integrate their services by connecting to a common hub. Moreover, it engages with international research communities using these services in order to understand and satisfy their demands for advanced computing for research.

The mission of EGI is pursued by coordinating and provisioning an international federated infrastructure that pools together service providers from both the public and private sectors in Europe to develop, integrate and deliver digital services for compute and data-intensive research and innovation. As an open initiative with a global outlook, the EGI Federation also connects service providers beyond Europe, following the collaboration needs of the served communities.

The latest Annual Report provides an extensive overview of the results that have been achieved through our collaborative efforts in 2023.



Approved EGI Council map from 2023



# About SRCE

SRCE – University of Zagreb University Computing Centre (<http://www.srce.unizg.hr/en>) as the major national infrastructural ICT institution is providing a modern, sustainable and reliable e–infrastructure for the research and education community in Croatia. It was founded in 1971 within the University of Zagreb, the only Croatian university at the time, with the purpose to enhance the implementation of information technologies in the academic community as well as in Croatia in general.

Today, SRCE is the main computing centre and the architect of the e–infrastructure, covering the whole Croatian research and high education system. Furthermore, SRCE is the competence centre for information and communication technologies as well as the centre for education and support in the area of ICT application.

# Overall EGI impact

SRCE is the legal representative of Croatia in the EGI Federation; as such it participates in EGI Council and performs all activities such as operation of EGI infrastructure services, providing user support and promoting EGI services to national users. SRCE promotes the building and operation of a multidisciplinary national Distributed Computing Infrastructure open to all scientists. This report provides an overview of the activities and the impact that was achieved thanks to this participation. The annual membership fee contributed by SRCE to the EGI Foundation in 2023 was 25,000 EUR.

The EGI Federation is composed of e–infrastructure providers from national and community initiatives, forming one of the largest distributed computing infrastructures for researchers in the world, integrating about 1,243,400 CPU cores and over 1,4 Exabyte of storage space from hundreds of data centres.

In 2023, the EGI Federation served around 95,000

users (+12%) from over 260 research communities. EGI users consumed 7 Billion HTC CPU hours (-1.04%), 12 Million Cloud CPU hours +17%), ran over 372 M computational jobs (+13.4%) and published over 2,900 open access publications.

As of the previous year, the research community with the largest number of users is Medical and Health Sciences (+43% annual increase in 2023), while the community with most extensive HTC CPU/h consumption is WLCG.

From the scientific communities engaged in 2023, the one with most extensive Cloud CPU/h consumption is Pangeo (+2959% annual increase in 2023).

Moreover, EGI engaged with a total of 265 scientific communities (10 new communities); 19 SMEs and business pilots, and 1 additional Research Infrastructure included in the ESFRI Roadmap, raising the total of number of ESFRI partners/users of EGI to 23.

# EGI contribution to Croatian excellence in science

EGI federates hundreds of resource centres that are located at participant countries, organizations and at collaborating e-Infrastructures worldwide. This federated infrastructure supports data- and compute-intensive research across Europe and the world.

Research Infrastructures and multi-national research collaborations are the largest adopters of EGI Services, the main contributors of thematic portals, and operate community-specific compute, storage and data systems based on EGI federation capabilities.

The services of the EGI federation have been used by 151 researchers from Croatia in 2023.

The estimated annual scientific output in 2023 produced by research communities, projects and scientific collaborations from Croatia and supported by the EGI Federation is estimated to amount to over 410 peer reviewed scientific publications.

The EGI Federation is currently working with over 40 Research Infrastructures, 33 of which include Croatian partners. These EGI-enabled research infrastructures, their Croatian members and their 2023 scientific output (publications) are detailed in the following pages of the report.

## Croatian research collaborations in EGI

### ALICE (High-Energy Physics)

- University of Split
- Ruđer Bošković Institute
- University of Zagreb

### CLARIN (Linguistics)

- HR-CLARIN University of Zagreb

### CMS (High-Energy Physics)

- University of Split
- Ruđer Bošković Institute

## EGI supported activities and services

ALICE has been supported since 2012 as part of the EGI WLCG collaboration, formally agreed in an MoU. Federated services delivered in the context of the WLCG MoU, including:

- Software support (consultancy to users and system administrators, (software maintenance and validation) Infrastructure and operations Services (infrastructure catalogue, accounting repository and portal, helpdesk, monitoring, operations portal, AAI)
- Software distribution services (UMC, CMD, operations documentation)
- Operations coordination (middleware deployment campaigns, procedures, innovation of tools)
- Security services and activities (CSIRT, Software vulnerability group, international security coordination, policies, IGTF distribution)

CLARIN thematic services has been supported by EGI since 2018. CLARIN has a Service Level Agreement with EGI, using the following services:

EGI services:

- EGI Cloud (Compute + Online Storage) for hosting the Virtual Language Observatory (VLO)
- Technical support
- Service integration

CMS has been supported since 2012 as part of the EGI WLCG collaboration, formally agreed in an MoU. Federated services delivered in the context of the WLCG MoU, including:

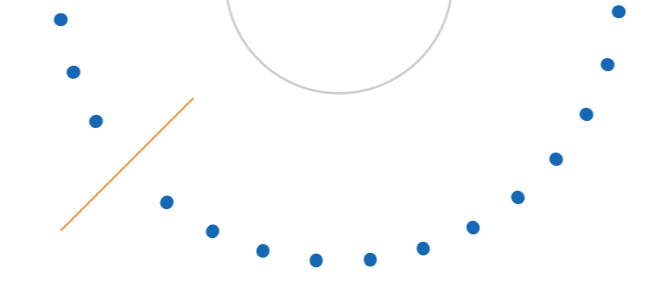
- Software support (consultancy to users and system administrators, (software maintenance and validation)
- Infrastructure and operations Services (infrastructure catalogue, accounting repository and portal, helpdesk, monitoring, operations portal, AAI)
- Software distribution services (UMC, CMD, operations documentation)
- Operations coordination (middleware deployment campaigns, procedures, innovation of tools)
- Security services and activities (CSIRT, Software vulnerability group, international security coordination, policies, IGTF distribution)

## Number of scientific papers published in 2023

65

38

117



## Croatian research collaborations in EGI

## EGI supported activities and services

## Number of scientific papers published in 2023

### CTA (Astronomy)

- University of Zagreb
- FESB – University of Split
- Josip Juraj Strossmayer University of Osijek
- Ruđer Bošković Institute
- University of Rijeka

The CTA experiment has been using compute resources from EGI partners for more than a decade. The services from the EGI federation that CTA uses include:

- EGI HTC services from 9 EGI participant countries (CZ, DE, IT, FR, ES, NL, RO, PT, SI)
- Software distribution services (UMC, CMD, operations documentation)
- Operations coordination (middleware deployment campaigns, procedures, innovation of tools)
- Security services and activities (CSIRT, Software vulnerability group, international security coordination, policies, IGTF distribution)

0

### JUNO (Neutrino Observatory)

- University of Zagreb
- Ruđer Bošković Institute

The JUNO experiment has been using compute resources from EGI partners for more than a decade. The services from the EGI federation that JUNO uses include:

- EGI HTC services from 4 EGI federated data centres from France, Italy, Russia and China.
- Software distribution services (UMC, CMD, operations documentation)
- Operations coordination (middleware deployment campaigns, procedures, innovation of tools)
- Security services and activities (CSIRT, Software vulnerability group, international security coordination, policies, IGTF distribution)

43

## Croatian research collaborations in EGI

## EGI supported activities and services

## Number of scientific papers published in 2023

### LSST (Astronomy)

- Ruđer Bošković Institute

The LSST survey federates High Throughput Compute (HTC) resources from France and the UK and run an analysis campaign in 2020 to prepare for the opening of the Vera C. Rubin Observatory. The campaign consumed over 11 million CPU-hour in 2020 to analyse generated images, imitating the telescope images that are expected to become available from 2023. The LSST compute federation benefited from the following EGI services:

- Software support (consultancy to users and system administrators, (software maintenance and validation)
- Infrastructure and operations Services (infrastructure catalogue, accounting repository and portal, helpdesk, monitoring, operations portal, AAI)
- Software distribution services (UMC, CMD, operations documentation)
- Operations coordination (middleware deployment campaigns, procedures, innovation of tools)
- Security services and activities (CSIRT, Software vulnerability group, international security coordination, policies, IGTF distribution)

11

### SeaDataNet (Oceanography)

- Institute of Oceanography and Fisheries

SeaDataNet has been supported by EGI partners in the EOSC-hub project in the setup and validation of a data access service on federated cloud resources. Since 2021 the SeaDataNet community is represented in the EGI Council by MARIS, and works with several EGI members in the EGI-ACE Horizon 2020 project. In EGI-ACE, SeaDataNet and EGI partners from Spain are setting up and operating a WebOcean Data Analysis service in the EGI cloud federation, and deliver the service in EOSC.

1



## Croatian research collaborations in EGI

### WeNMR (Structural Biology)

- Ruđer Bošković Institute
- University of Zagreb
- Medicinski Fakultet Osijek

## EGI supported activities and services

WeNMR is supported by EGI since 2011 and has a Service Level Agreement since 2016. The EGI Services used by the community include:

- High-Throughput, Cloud + Online Storage services from 23 EGI federated sites from the Netherlands, Italy, France, Germany, UK, Poland, the Asia Pacific region, IberGrid (Spain and Portugal), Italy, the Latin America region.
- EGI Workload Manager
- Trust and identity management with Check-in
- Technical support: WeNMR benefited from continual support through dedicated support activities in various EGI flagship projects: EGI-Engage, EOSC-hub and EGI-ACE.

## Number of scientific papers published in 2023

136

# Participated projects

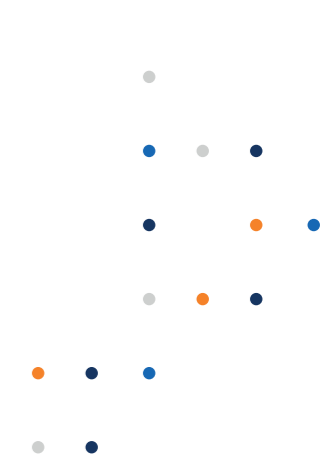
The EGI Foundation coordinated one Horizon 2020 projects, EGI ACE (January 2021–June 2023). Moreover, it leads two Horizon Europe Projects, iMagine (September 2022–December 2025) and interTwin (September 2022–August 2025).

Furthermore, the EGI Federation was involved in 8 additional projects, increasing the innovation potential of its participants.

The EGI Federation participates in Horizon 2020 and Horizon Europe projects together with Croatian institutions to facilitate the uptake and use of e-infrastructure services for science. A summary of these projects, the involved institutes and the scope of the collaboration is provided in the next table.







### Project title

### Scope of collaboration

### Participating beneficiaries from the country



EGI coordinates the task dedicated to the Single Sign-On access with the EGI Check-in service.

- SRCE
- University of Zadar



EGI is involved in the work ensuring the integration of the TRIPLE solution into the EOOSC; also, it collaborates to the sustainability and innovation activities by setting up the processes to prepare maturity assessment and innovative agile management. Last but not least, it guides the implementation of the EGI AAI service in TRIPLE.

- University of Zadar

# Infrastructure contributions

The EGI Federation offers two complementary compute capabilities: the High-Throughput Compute (HTC) federation and the Cloud federation. 2 Croatian data centres contribute to these federations:

#### HTC Federation:

egee.srce.hr (University Computing Centre, Zagreb, Croatia)

#### Cloud Federation:

fedcloud.srce.hr (University of Zagreb)

The data centres provided 4 service endpoints to EGI communities in 2023. The data centres responded to 5 support tickets through the EGI Helpdesk.

# Methodology

Data for this impact report has been collected from the following sources.

- Infrastructure contributions, infrastructure usage by research communities: [EGI Accounting System](#)
- List of research publications by supported research communities (table 1)

<b>AMS-02</b> <a href="https://ams02.space/publications">https://ams02.space/publications</a>	<b>ILC</b> <a href="https://inspirehep.net/literature?sort=mostrecent&amp;size=25&amp;page=1&amp;q=international%20Linear%20Collider%20&amp;earliest_date=2021--2021">https://inspirehep.net/literature?sort=mostrecent&amp;size=25&amp;page=1&amp;q=international%20Linear%20Collider%20&amp;earliest_date=2021--2021</a>
<b>ALICE</b> <a href="https://alice-publications.web.cern.ch/publications">https://alice-publications.web.cern.ch/publications</a>	<b>INSTRUCT</b> <a href="https://instruct-eric.eu/content/publications-list">https://instruct-eric.eu/content/publications-list</a>
<b>ATLAS</b> <a href="https://cds.cern.ch/collection/ATLAS%20Papers?ln=en">https://cds.cern.ch/collection/ATLAS%20Papers?ln=en</a>	<b>JUNO</b> <a href="https://inspirehep.net/">https://inspirehep.net/</a>
<b>AUGER</b> <a href="https://www.auger.org/science/publications/journal-articles">https://www.auger.org/science/publications/journal-articles</a>	<b>KM3NET</b> <a href="https://www.km3net.org/about-km3net/publications/publication/">https://www.km3net.org/about-km3net/publications/publication/</a> ; <a href="https://inspirehep.net/literature?q=collaboration:KM3NeT_year:2021">https://inspirehep.net/literature?q=collaboration:KM3NeT_year:2021</a>
<b>BELLE</b> <a href="https://belle.kek.jp/belle/publications.html">https://belle.kek.jp/belle/publications.html</a> ; <a href="https://inspirehep.net/literature?q=collaboration:belle_year:2021">https://inspirehep.net/literature?q=collaboration:belle_year:2021</a>	<b>LifeWatch</b> <a href="https://www.lifewatch.eu/catalogue-of-virtual-labs/medobis/publications/">https://www.lifewatch.eu/catalogue-of-virtual-labs/medobis/publications/</a>

<b>BIOMED</b> <a href="https://vip.creatis.insa-lyon.fr/documentation/">https://vip.creatis.insa-lyon.fr/documentation/</a>	<b>LOFAR</b> <a href="http://old.astron.nl/radio-observatory/lofar-science/lofar-papers/lofar-papers">http://old.astron.nl/radio-observatory/lofar-science/lofar-papers/lofar-papers</a> ; <a href="https://lofar-surveys.org/publications.html">https://lofar-surveys.org/publications.html</a> , or <a href="https://ui.adsabs.harvard.edu/search?q=full%3A(%22designed%20and%20constructed%20by%20ASTRON%22)%20OR%20title%3A%22LOFAR%22%20year%3A2021-2021%20property%3Arefereed%20-bibstem%3A(%22AN%22%20OR%20%22MNRAS,tmp%22)&amp;sort=date%20desc%2C%20bibcode%20desc&amp;p_0">https://ui.adsabs.harvard.edu/search?q=full%3A(%22designed%20and%20constructed%20by%20ASTRON%22)%20OR%20title%3A%22LOFAR%22%20year%3A2021-2021%20property%3Arefereed%20-bibstem%3A(%22AN%22%20OR%20%22MNRAS,tmp%22)&amp;sort=date%20desc%2C%20bibcode%20desc&amp;p_0</a>
<b>CTA</b> <a href="https://www.cta-observatory.org/science/library/">https://www.cta-observatory.org/science/library/</a>	<b>LCHb</b> <a href="https://cds.cern.ch/collection/LHCb%20Papers?ln=en">https://cds.cern.ch/collection/LHCb%20Papers?ln=en</a>
<b>CLARIN</b> <a href="https://beta.clarin.openaire.eu/search/advanced/research-outcomes?sortBy=resultdateofacceptance,descending&amp;type=publications&amp;year=range2021:2021">https://beta.clarin.openaire.eu/search/advanced/research-outcomes?sortBy=resultdateofacceptance,descending&amp;type=publications&amp;year=range2021:2021</a>	<b>LSST</b> <a href="https://ui.adsabs.harvard.edu/?with_year:2021+author:(%22LSST%22+OR+%22Vera+C.+Rubin%22)+collection:astronomy+property:refereed">https://ui.adsabs.harvard.edu/?with_year:2021+author:(%22LSST%22+OR+%22Vera+C.+Rubin%22)+collection:astronomy+property:refereed</a>
<b>CMS</b> <a href="http://cms-results.web.cern.ch/cms-results/public-results/publications/CMS/index.html">http://cms-results.web.cern.ch/cms-results/public-results/publications/CMS/index.html</a>	<b>NA62</b> <a href="https://cds.cern.ch/collection/NA62%20Papers?ln=en">https://cds.cern.ch/collection/NA62%20Papers?ln=en</a>
<b>DUNE</b> <a href="https://inspirehep.net/literature?q=collaboration:DUNE_year:2021">https://inspirehep.net/literature?q=collaboration:DUNE_year:2021</a>	<b>OPENCOASTS</b> <a href="http://opencoasts.lnec.pt/index_en.php">http://opencoasts.lnec.pt/index_en.php</a>
<b>EISCAT_3D</b> <a href="https://eiscat.se/scientist/publications/">https://eiscat.se/scientist/publications/</a>	<b>PANOSC</b> <a href="https://www.panosc.eu/publications/">https://www.panosc.eu/publications/</a>

# National institutional members of supported research communities (table 2)

## ELI-BEAM

<https://www.eli-beams.eu/publike/>

## SeaDataNet

<https://www.seadatanet.org/Publications/Scientific-publications>

## ELI-NP

[https://www.eli-np.ro/scientific\\_papers.php](https://www.eli-np.ro/scientific_papers.php)

## SKA

[https://ui.adsabs.harvard.edu/search/fq=%7B!type%3Dapp%20v%3D%24fq\\_database%7D&fq\\_database=database%3A%20astronomy&q=pubdate%3A%5B2021-01%20TO%202021-12%5D%20title%3A\(SKA\)&sort=date%20desc%2C%20bibcode%20desc&p\\_ =0](https://ui.adsabs.harvard.edu/search/fq=%7B!type%3Dapp%20v%3D%24fq_database%7D&fq_database=database%3A%20astronomy&q=pubdate%3A%5B2021-01%20TO%202021-12%5D%20title%3A(SKA)&sort=date%20desc%2C%20bibcode%20desc&p_ =0)

## EMSO-ERIC

from the community representative; SLA <https://documents.egi.eu/document/3539>

## SNO+

<https://snoplus.phy.queensu.ca/results/collaboration-papers.html>

## FUSION

<https://documents.egi.eu/public/ShowDocument?docid=3484>

## VIRGO

<https://pnp.ligo.org/ppcomm/Papers.html>

## HESS

<https://www.mpi-hd.mpg.de/hfm/HESS/pages/publications/>

## WeNMR

<https://explore.openaire.eu/> advanced search project outcomes. field to search "project" enter project name; Citation of HADDOCK web server: [https://scholar.google.nl/scholar?hl=en&as\\_sdt=2005&cites=10355645612647046441&scipsc=&as\\_ylo=2021&as\\_yhi=2021](https://scholar.google.nl/scholar?hl=en&as_sdt=2005&cites=10355645612647046441&scipsc=&as_ylo=2021&as_yhi=2021); Citations of the AMBER web portal publication: [https://scholar.google.com/scholar?as\\_ylo=2021&hl=en&as\\_sdt=0.5&scioldt=0.5&cites=6696812766870837905&scipsc=](https://scholar.google.com/scholar?as_ylo=2021&hl=en&as_sdt=0.5&scioldt=0.5&cites=6696812766870837905&scipsc=); Citations of the FANTEN web portal publication: [https://scholar.google.com/scholar?as\\_ylo=2021&hl=en&as\\_sdt=0.5&scioldt=0.5&cites=10578718345045994565&scipsc=](https://scholar.google.com/scholar?as_ylo=2021&hl=en&as_sdt=0.5&scioldt=0.5&cites=10578718345045994565&scipsc=); Citations of the DISVIS/POWERFIT web portals publication: [https://scholar.google.com/scholar?as\\_ylo=2021&hl=en&as\\_sdt=2005&cites=6482114501244947208&scipsc=](https://scholar.google.com/scholar?as_ylo=2021&hl=en&as_sdt=2005&cites=6482114501244947208&scipsc=); Citations of the SpotON web portal: [https://scholar.google.com/scholar?as\\_ylo=2021&hl=en&as\\_sdt=2005&cites=6482114501244947208&scipsc=](https://scholar.google.com/scholar?as_ylo=2021&hl=en&as_sdt=2005&cites=6482114501244947208&scipsc=)

## Ice-Cube

<https://icecube.wisc.edu/science/publications/>

## XENON

<https://inspirehep.net/literature?q=collaboration:XENON&year:2021>

## AMS-02

<https://ams02.space/collaboration/institute>

## ILC

<https://linearcollider.org/team/>

## ALICE

[https://alice-collaboration.web.cern.ch/General/Members/List\\_Institutes.html](https://alice-collaboration.web.cern.ch/General/Members/List_Institutes.html)

## INSTRUCT

<https://instruct-eric.eu/countries>

## ATLAS

<https://atlas.cern/discover/collaboration>

## JUNO

<https://juno.ihep.ac.cn/collaboration.php>

## AUGER

<https://www.auger.org/collaboration/institutions>, <https://www.auger.org/collaboration/funding-agencies>

## KM3NET

<https://www.km3net.org/about-km3net/collaboration/members/>

## BELLE

<https://belle.kek.jp/bdocs/collaboration.html>

## LifeWatch

<https://www.lifewatch.eu/organisation-governance/>

## BIOMED

<https://vip.creatis.insa-lyon.fr/>

## LOFAR

<https://www.astron.nl/telescopes/>

## CTA

<https://www.cta-observatory.org/about/cta-consortium/>

## LCHb

<https://lhcb-public.web.cern.ch/en/collaboration/Collaboration-en.html>

## CLARIN

<https://www.clarin.eu/content/participating-consortia>

## LSST

<https://www.lsstcorporation.org/international-contributors>

#### CMS

<https://cms.cern/collaboration/cms-institutes>

#### NA62

<https://greybook.cern.ch/experiment/detail?id=NA62>

#### DUNE

<https://bnf-dune.fnal.gov/about/countries-and-institutions-participating-in-dune/>

#### OPENCOASTS

[http://opencoasts.inec.pt/index\\_en.php](http://opencoasts.inec.pt/index_en.php)

#### EISCAT\_3D

<https://eiscat.se/wp-content/uploads/2016/12/EISCAT-Organogram-202x.jpg>; <https://eiscat.se/scientist/document/information/>

#### PANOSC

<https://www.panosc.eu/partners/>

#### ELI-BEAM

<https://www.eli-beams.eu/about/cooperation/science/>

#### SeaDataNet

<https://www.seadatanet.org/About-us/SeaDataNet-AISBL/Members>

#### ELI-NP

[https://www.eli-np.ro/scientific\\_collaborations.php](https://www.eli-np.ro/scientific_collaborations.php)

#### SKA

<https://www.skatelescope.org/participating-countries/>

#### EMSO-ERIC

<http://emso.eu/organization/>

#### SNO+

<https://snoplus.phy.queensu.ca/collaboration.html>

#### FUSION

<https://documents.egi.eu/public/ShowDocument?docid=3484>

#### VIRGO

<https://apps.virgo-gw.eu/vmd/public/institutions>

#### HESS

<https://www.mpi-hd.mpg.de/hfm/HESS/pages/collaboration/>

#### WeNMR

<https://documents.egi.eu/document/2751>

#### Ice-Cube

<https://icecube.wisc.edu/collaboration/institutions/>

#### XENON

[https://science.purdue.edu/xenon1t/?page\\_id=27](https://science.purdue.edu/xenon1t/?page_id=27)



## EGI Membership Impact Report

### Contact us

Science Park 140  
1098 XG Amsterdam  
Netherlands

Phone:  
+31 (0)20 89 32 007

Email:  
[contact@egi.eu](mailto:contact@egi.eu)



[www.egi.eu](http://www.egi.eu)